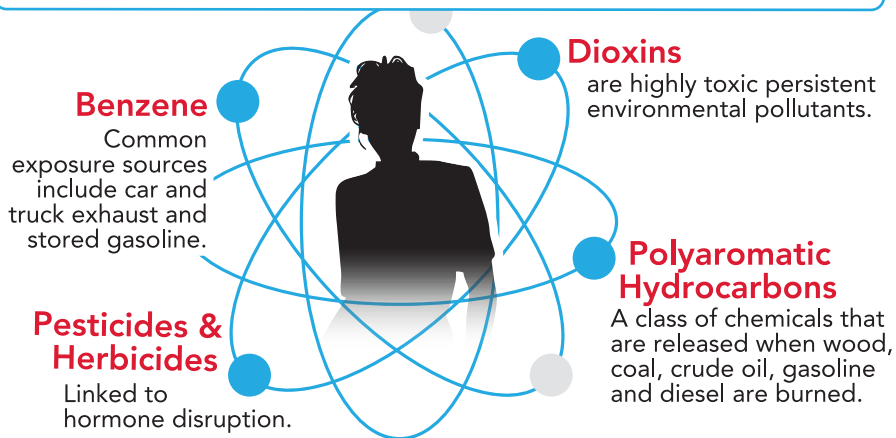




Why We Must Stop Fossil Fuels

It's time to stop fossil fueling the breast cancer crisis!

FOSSIL FUELS' CONNECTION TO BREAST CANCER



COMMUNITIES OF COLOR HIT FIRST & WORST BY THE FOSSIL FUEL ECONOMY



Racial bias in industrial zoning has led to extraction operations, chemical and plastic manufacturers, and refineries being disproportionately located in Black, Brown, and Indigenous communities.

Extreme weather from climate change increases the risk of chemical spills and accidents in these industrial facilities.



Decades of racially biased urban planning practices have led to a greater concentration of highways, ports, and trainlines located in close proximities to where people of color live.



EXTRACTION

PROCESSING & MANUFACTURING

PRODUCTS & BYPRODUCTS

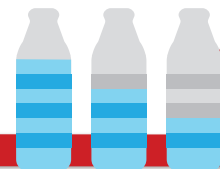
INDIVIDUAL BODY BURDEN

THE FOSSIL FUEL CONTINUUM

Many chemicals in our air, water, food, and everyday items come from extracting, burning, and processing fossil fuels. The collective exposures throughout the fossil fuel continuum poses grave threats on our health, including breast cancer.

Production:

Some plastics are produced from chemicals exposing communities.



Use:

Many plastics, including food and drink packaging, leach hormone disrupting chemicals.

**PLASTIC =
FOSSIL FUELS
IN SOLID FORM**

Disposal:

Disposed plastics can leach hormone disrupting chemicals.

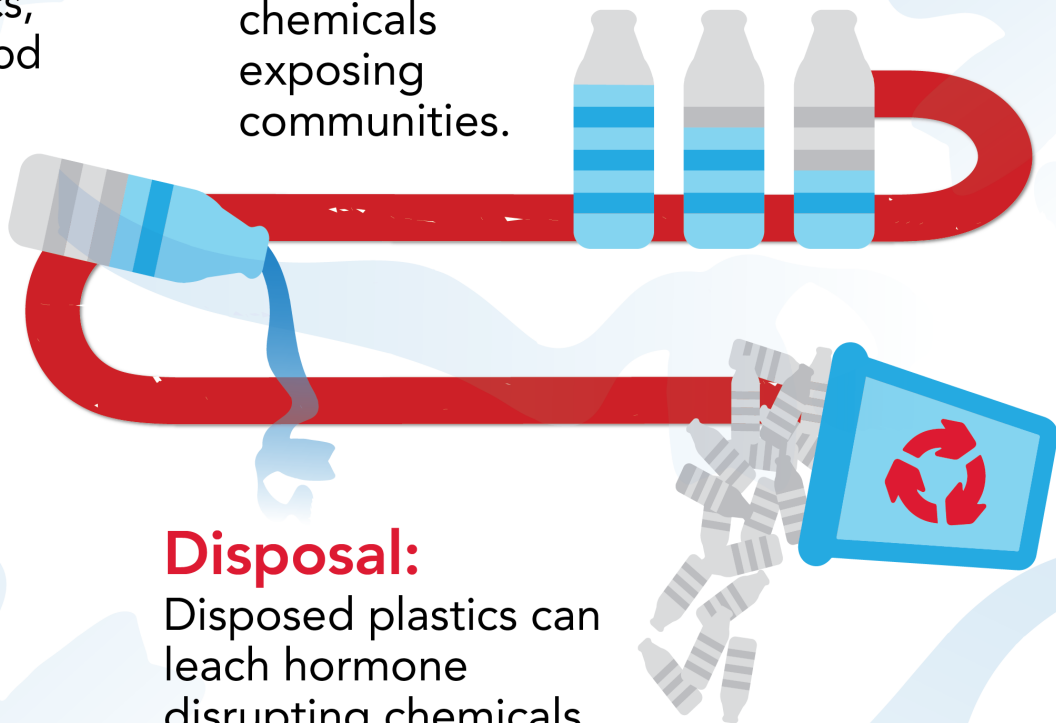


Use:

Many plastics, including food and drink packaging, leach hormone disrupting chemicals.

Production:

Some plastics are produced from chemicals exposing communities.



Disposal:

Disposed plastics can leach hormone disrupting chemicals.



**PLASTIC =
FOSSIL FUELS
IN SOLID FORM**

BREASTCANCERACTION.org



COMMUNITIES OF COLOR HIT FIRST & WORST BY THE FOSSIL FUEL ECONOMY

BREASTCANCERACTION.org



Racial bias in industrial zoning has led to extraction operations, chemical and plastic manufacturers, and refineries being disproportionately located in Black, Brown, and Indigenous communities.



Extreme weather from climate change increases the risk of chemical spills and accidents in these industrial facilities.



Decades of racially biased urban planning practices have led to a greater concentration of highways, ports, and trainlines located in close proximities to where people of color live.



A diagram illustrating the fossil fuel continuum. It features a large target with concentric rings in white, grey, and red. Four horizontal bars are positioned across the target, each representing a stage of exposure. From the outermost ring to the center, the bars are labeled: 'EXTRACTION' (white), 'PROCESSING & MANUFACTURING' (grey), 'PRODUCTS & BYPRODUCTS' (red), and 'INDIVIDUAL BODY BURDEN' (grey). To the left of the target, two black silhouettes of women are shown. The larger silhouette on the left is positioned in front of the 'EXTRACTION' and 'PROCESSING & MANUFACTURING' bars, while the smaller silhouette on the right is positioned in front of the 'PRODUCTS & BYPRODUCTS' and 'INDIVIDUAL BODY BURDEN' bars. The background is white with faint grey cloud-like shapes.

EXTRACTION

PROCESSING & MANUFACTURING

PRODUCTS & BYPRODUCTS

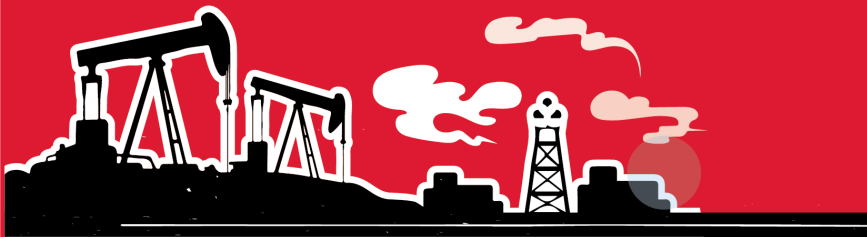
INDIVIDUAL BODY BURDEN



THE FOSSIL FUEL CONTINUUM

Many chemicals in our air, water, food, and everyday items come from extracting, burning, and processing fossil fuels. The collective exposures throughout the fossil fuel continuum poses grave threats on our health, including breast cancer.

BREASTCANCERACTION.org



FOSSIL FUELS' CONNECTION TO BREAST CANCER

BREASTCANCERACTION.org

Benzene

Common exposure sources include car and truck exhaust and stored gasoline.

Pesticides & Herbicides

Linked to hormone disruption.

Polyaromatic Hydrocarbons

A class of chemicals that are released when wood, coal, crude oil, gasoline & diesel are burned.

Dioxins

are highly toxic persistent environmental pollutants.

